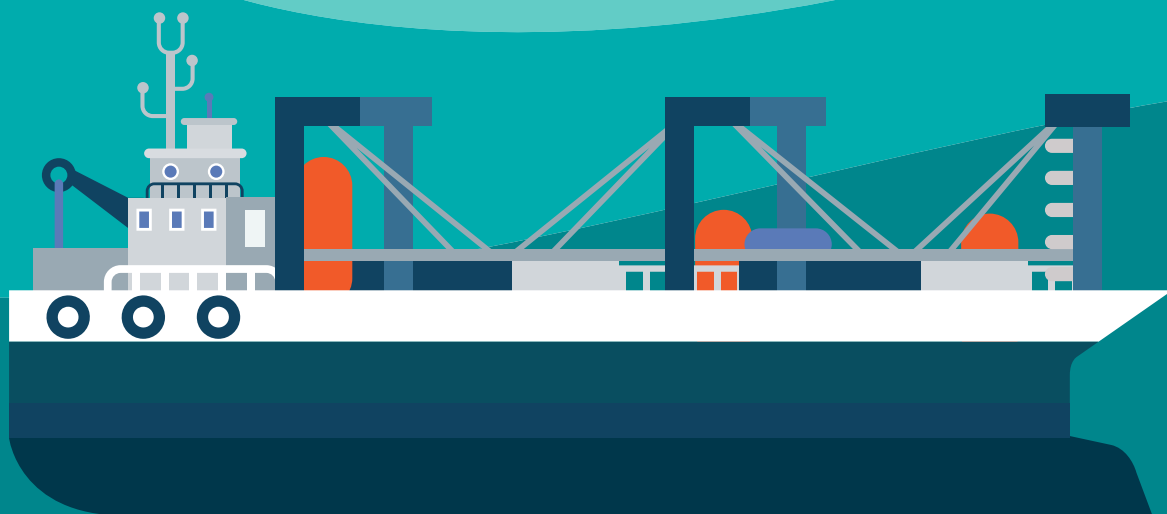




Statistical
Report

Use of the port



Use of the port

Use of quays

Quay or berth	Loading	Unloading	Transit	Local traffic	Total	
H-0010- Levante comercial	General freight	1,073	1,800		2,872	
H-0015-Oil Tankers	Bulk liquids	3,566,342	371,829	40,104	5,495	3,983,770
H-0020-Ores	General freight	53,170	1			53,171
	Bulk solids	54,847	870,515			925,362
H-0025- Ingeniero Juan Gonzalo	General freight	56,396	70,464			126,861
	Bulk solids	684,535	989,464	57,683		1,731,681
H-0027-Ciudad de Palos	General freight	9,504	266			9,770
	Bulk solids	370,898	795,878			1,166,776
H-0033-Impala Terminals	Bulk solids	942,266		120,748		1,063,015
H-0035-Atlantic Copper Norte	Bulk liquids	23,650				23,650
H-0057- Atlantic Copper Sur TNP-1	Bulk liquids	584,141				584,141
H-0060- South Quay	General freight	825,998	281,228	3		1,107,229
H-0062- Enagás Jetty	Bulk liquids	23,121	3,213,686			3,236,807
H-0065- Phosphoric Acid Jetty	Bulk liquids	5,969	38,907			44,875

Quay or berth		Loading	Unloading	Transit	Local traffic	Total
H-0070-Fertilizers Jetty	Bulk liquids	74,096				74,096
H-0075-Atlantic Copper TNP-2	Bulk liquids	177,926			20,001	197,928
H-0085-Fertinagro Jetty - South	Bulk liquids		120,024			120,024
H-0090-Reina Sofía	Bulk liquids	2,240,480	1,311,386		37,471	3,589,337
H-0092-Decal Jetty	Bulk liquids	257,023	655,979	2,715,535	26,395	3,654,932
H-0095-Crude oil single buoy	Bulk liquids		8,066,009			8,066,009
Total		9,951,434	16,787,436	2,934,073	89,363	29,762,306

Docks

Number of vessels docked	1,469
G.T. of vessels docked	23,571,554
G.T. per days docked	39,835,529

Anchoring

Number of vessels anchored	9
G.T. of vessels anchored	610,006
G.T. per days of vessels anchored	907,220

Berths

Berths	2.367
Metros lineales de atraque (suma de esloras)	329.882
Metros lineales por días de atraque	790.279

Cranes

CRANE TYPE	WITH HOOK		WITH CLAMSHELL BUCKET		TOTAL	
	Hours	Tonnes	Hours	Tonnes	Hours	Tonnes
SERVICE CRANES						
Up to 6 tonnes	-	-	-	-	-	-
Between 7 and 12 tonnes	-	-	-	-	-	-
Between 13 and 16 tonnes	-	-	-	-	-	-
Over 16 tonnes	-	-	-	-	-	-
TOTAL SERVICE CRANES	-	-	-	-	-	-
PRIVATE CRANES						
Up to 6 tonnes	-	-	-	-	-	-
Between 7 and 12 tonnes	-	-	-	-	-	-
Between 13 and 16 tonnes	-	-	-	-	-	-
Over 16 tonnes	-	-	-	-	-	-
TOTAL PRIVATE CRANES	-	-	-	-	-	-

Special installations (mobile cranes)

INSTALLATION AND OWNER	HOURS	TONNES
Gottwald no. 26 mobile crane - Ingeniero Juan Gonzalo Quay	10.00	6,700
Gottwald no. 28 mobile crane - Ingeniero Juan Gonzalo Quay	784.04	523,839
Gottwald no. 29 mobile crane - Ingeniero Juan Gonzalo Quay	795.58	531,440
Gottwald no. 30 mobile crane - Ingeniero Juan Gonzalo Quay	802.35	535,970
Gottwald no. 31 mobile crane - Ingeniero Juan Gonzalo Quay	679.08	453,625
LHM 400 mobile crane - Ingeniero Juan Gonzalo Quay	549.00	366,702
LHM 500 mobile crane - Ingeniero Juan Gonzalo Quay	688.00	459,684
LHM 600 mobile crane - Ingeniero Juan Gonzalo Quay	770.00	514,360
Liebher 400 no. 1 mobile crane - Ingeniero Juan Gonzalo Quay	1,063.00	710,184
Liebher 400 no. 2 mobile crane - Ingeniero Juan Gonzalo Quay	1,174.00	784,330
Total	7,315.05	4,886,834

Fork lifts

No. of hours	4,943
--------------	-------

Conveyor belts

No. of hours	669
--------------	-----

Loaders

No. of hours	25,964
--------------	--------

Manoeuvring traction

No. of circulations RFAPH	1,924
---------------------------	-------

Wagons

Net Tonnes Towed-Pushed	698,340
-------------------------	---------

Weighbridges

	Ingeniero Juan Gonzalo Quay Weighbridge	South Quay Weighbridge	FF.CC. Weighbridge
Total tares	11,292	103	-
Total gross	54,645	104	-

Floating cranes

Not applicable

Tugs

No. of services	1,958
No. of hours	3,914

Slipways *

No. of slipways	3
Tonnes pulled up slipways**	1,329

* The only existing slipways are in the shipyards.

**Sum of the GT of the vessels.